

## Hydraulic Jacks & Tools Hydraulic cylinders, single-acting



YLS



YFS

### YLS and YFS

#### Low-height and flat cylinders

Single-acting with spring return,  
capacity max. 10 - 100t

Low-height cylinders are recommended for all lifting, pushing, levelling, pressing applications especially in tight working areas.

These very compact hydraulic cylinders are designed for lifting and positioning jobs as well as all general maintenance applications, where low height, portability and light weight are needed. These versatile cylinders are found in all industrial areas like steel mills, civil engineering, heavy construction industry, power plants, off-shore industries etc. Due to their short strokes flat cylinders should not be subjected to side loading.

#### Features

- Yale ChroMo-Design.
- Operating pressure max. 700 bar.
- Single-acting with spring return.
- Low height for tight working areas.
- Cylinder body and piston are made from solid chromium-molybdenum steel and heat-treated.
- Stop ring can bear full capacity (pressure) and is fitted with dirt wiper.
- Oil port thread 3/8 NPT.
- Incl. female coupler half model CFY-1.
- YLS-100/55 with lifting rings,  
YFS-100/15 with carrying handle.

### INFO

Selection charts "cylinder/hand pumps" can be found on pages 416-417.

Travel-speed charts are supplied on pages 418-419.



**Hydraulic Jacks & Tools** Hydraulic cylinders, single-acting

**Technical data YLS**

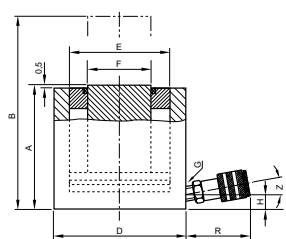
Cylinder size t	Model	Art.-No.	Capacity max. kN	Stroke mm	Effective plunger area cm <sup>2</sup>	Oil volume max. cm <sup>3</sup>	Closed height mm	Cylinder outside diameter mm	Weight kg
10	YLS-10/35	N11300634	100	35	14.3	51	86	70	2.5
20	YLS-20/45	N11300635	200	45	28.6	128	100	85	4.0
30	YLS-30/60	N11300636	300	60	42.9	266	120	100	6.5
50	YLS-50/60	N11300637	500	60	71.5	426	122	125	10.4
100	YLS-100/55	N11300638	1000	55	143.0	788	141	170	24.0

**Technical data YFS**

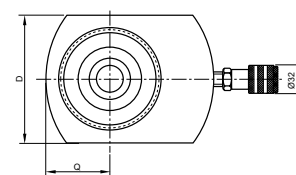
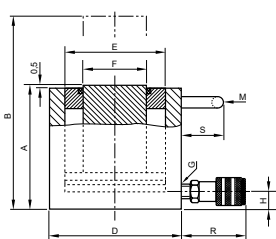
Cylinder size t	Model	Art.-No.	Capacity max. kN	Stroke mm	Effective plunger area cm <sup>2</sup>	Oil volume max. cm <sup>3</sup>	Closed height mm	Cylinder outside diameter mm	Weight kg
10	YFS-10/11	N11300629	100	11	14.3	16	43	56	1.5
20	YFS-20/15	N11300630	200	15	28.6	31	60	76	3.0
30	YFS-30/15	N11300631	300	15	44.2	66	60	96	4.2
50	YFS-50/15	N11300632	500	15	71.5	107	70	145	8.7
100	YFS-100/15	N11300633	1000	15	143.0	215	91	170	16.0

**Dimensions YLS and YFS**

Model	YLS-10/35	YLS-20/45	YLS-30/60	YLS-50/60	YLS-100/55	YFS-10/11	YFS-20/15	YFS-30/15	YFS-50/15	YFS-100/15
A, mm	86	100	120	122	141	43	60	60	70	91
B, mm	121	145	180	182	196	54	75	75	85	106
D, mm	70	85	100	125	170	56	76	96	145	170
D1, mm	-	-	-	-	-	83	95	115	-	-
E, mm	43	60	75	95	135	43	60	75	95	135
F, mm	38	50	57	75	120	38	50	57	75	120
H, mm	16	17	19	19	26	16	19	19	19	22
M, mm	-	-	-	-	148	-	-	-	-	85
Q, mm	-	-	-	-	-	28	38	48	-	-
R, mm	54	54	54	54	54	54	54	54	54	54
S, mm	-	-	-	-	25	-	-	-	-	55
Z, °	10	10	5	5	-	10	5	5	5	5



YLS



YFS

